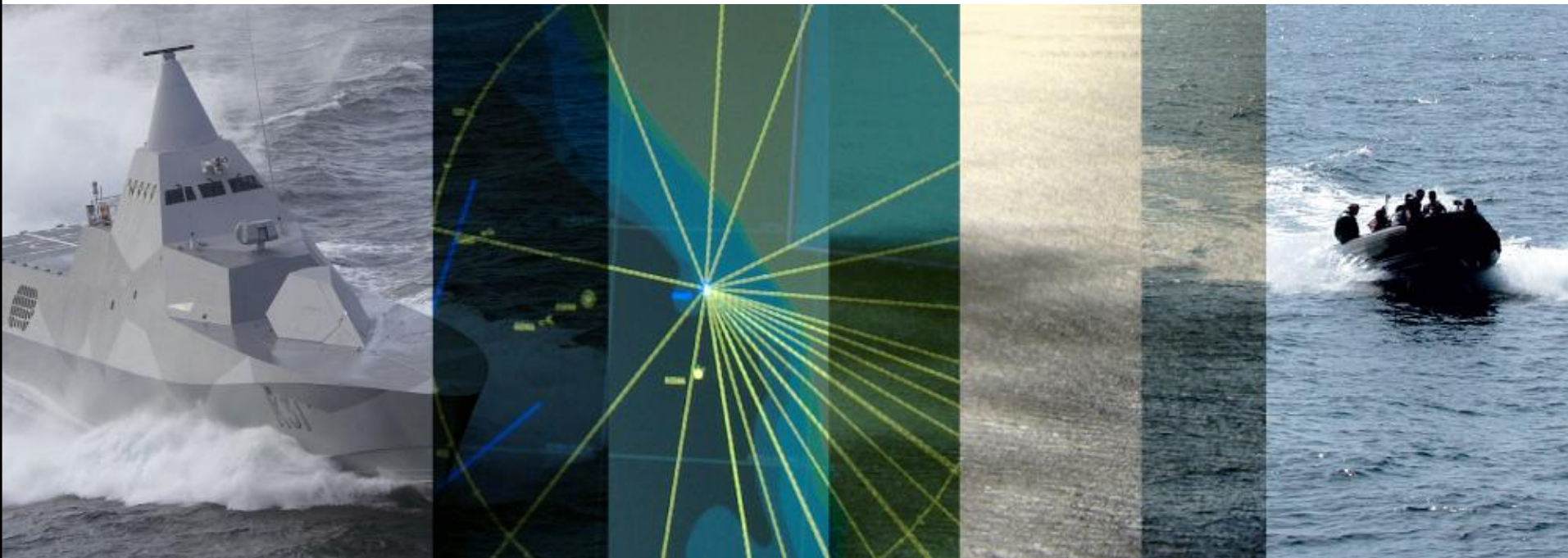




SAAB

SEA GIRAFFE AMB

MULTI-ROLE 3D NAVAL SURVEILLANCE RADAR



FEATURE COMPACT AND LIGHT-WEIGHT

DOMAIN NAVAL

ADVANTAGE LITTORAL AND BLUE WATER OPERATIONS

DETECT AND TRACK

The Sea GIRAFFE AMB delivers superior multi mission performance in highly cluttered environments, using a full volume search and unique RAM localisation functionality. With a dedicated surface channel, the radar simultaneously detects and tracks targets on and above the water surface, responding to the threat of small and fast targets.



OVERVIEW

Description

Saab's multi-role naval surveillance radar uses 3D Agile Multi Beam (AMB) technology. The radar provides simultaneous air and surface surveillance to detect extremely small targets, SSM and surface targets as well as splash spotting, RAM alert and weapon location.

Program Status

Mod B in production
Mod C commenced in 2009.

Key customers

Sweden, USA, Australia, Poland, UAE and others.

Key figures

Radar type

Fully coherent

Antenna type

3D phased array,
digital beam forming

Elevation coverage 0-70°
in maximum roll and pitch

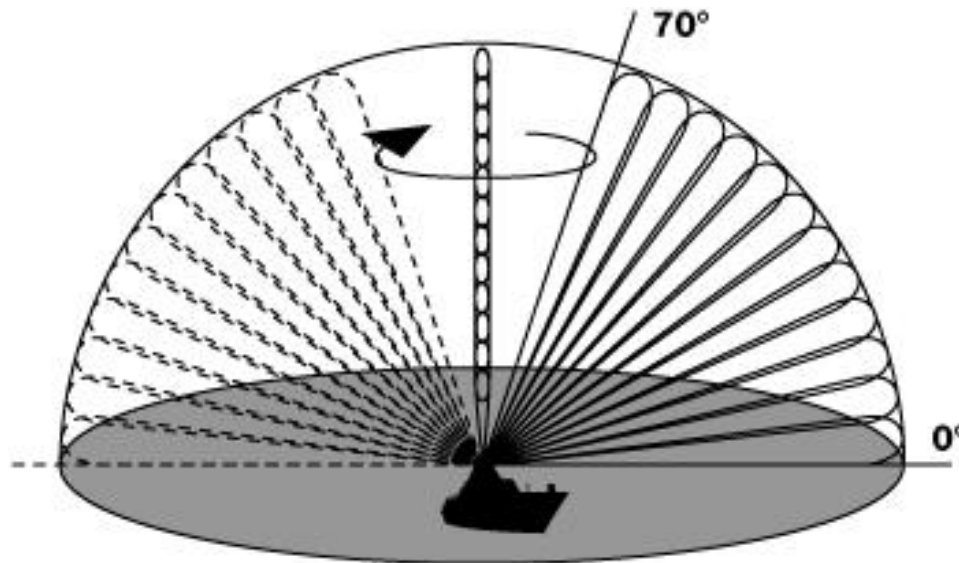
Rotation rate 60 and 30 rpm

Transmitter TWT or LPI
selectable

Frequency 5.4-5.9 GHz

MULTI-ROLE MISSION

The low top weight radar uses the latest in true 3D radar technology. Simultaneously transmitting and receiving signals on the C-band frequency, Sea GIRAFFE AMB provides multi-role capabilities on and above the surface. Delivering fast reaction time for all targets, the beam package can be tailored for specific tactical environments.



BENEFITS

- Provides sufficient time to react to threats
- Simultaneous air, surface and weapon localisation operations
- Highly effective in heavy clutter environments
- Reliable with high mean time between failure
- Cost-efficient
- High availability
- Proven product and in service around the world





SAAB

SAABGROUP.COM